

PASTURE TO PLATE

We make enough food in New Zealand to feed 40 million people - that's the population of the Ukraine, Canada or Argentina

From the soil that grows pasture and food, to the export of high-quality products, the agri-food industry is essential to New Zealand, and the world.

NEW ZEALAND'S TOTAL FOOD EXPORTS NZ\$72.2 BILLION

\$9.8 billion of this was meat exports

28% of our total exports are milk, butter and cheese worth \$20.6 billion

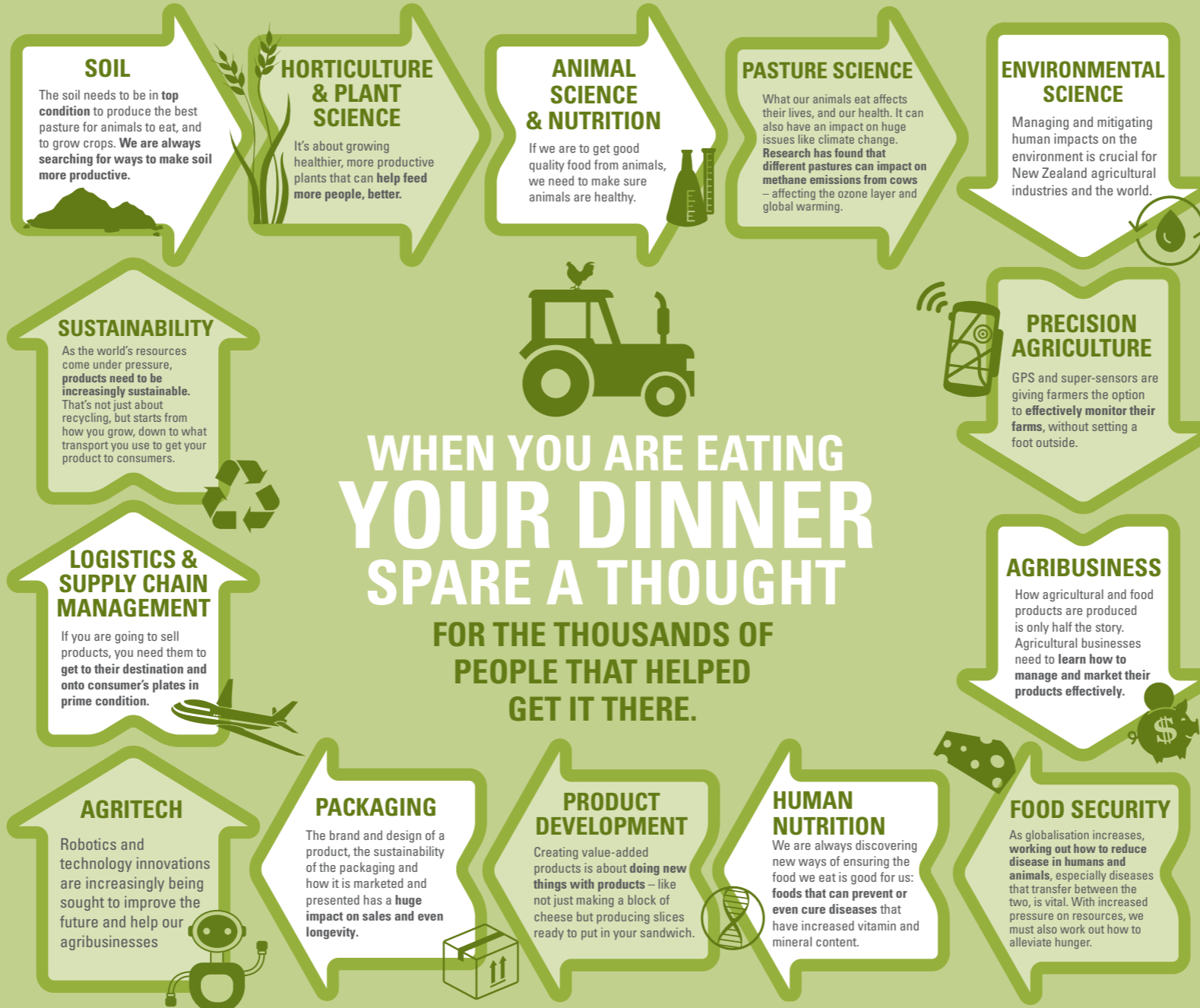
NEW ZEALAND POPULATION 5.1 MILLION

6 MILLION DAIRY COWS

3.9 MILLION BEEF ANIMALS

26.8 MILLION SHEEP

WE ARE THE LARGEST EXPORTER OF MILK PRODUCTS IN THE WORLD NZ\$17 BILLION



WHEN YOU ARE EATING YOUR DINNER SPARE A THOUGHT FOR THE THOUSANDS OF PEOPLE THAT HELPED GET IT THERE.

RESEARCH AT MASSEY HAS SHOWN

THAT BLUEBERRIES CAN HELP ATHLETES RECOVER FASTER FROM EXERCISE

THAT FORMS OF PASTURE INCLUDING PLANTAIN MAY HELP DECREASE GREENHOUSE GAS EMISSIONS AND STOP NITROGEN ENTERING WATERWAYS

HOW WE HELP

OUR GRADUATES GO ON TO WORK ALL OVER NEW ZEALAND AND THE WORLD IN FOOD COMPANIES, AGRIBUSINESS BOTH LARGE AND SMALL OR SET UP THEIR OWN BUSINESS DRIVING NEW INNOVATION

WHENAUA HAUMANU - THE MOST COMPREHENSIVE STUDY OF PASTORAL FARMING EVER UNDERTAKEN IN NEW ZEALAND WAS LAUNCHED IN 2022 BY THE AGRICULTURE MINISTER THIS IS A \$26 MILLION PROGRAMME OVER SEVEN YEARS AND IS LED BY MASSEY

MASSEY HOSTS THE RIDDET INSTITUTE, A WORLD-RENOWNED CENTRE OF FOOD AND HEALTH INNOVATION RESEARCH EXCELLENCE

MASSEY FOOD TECHNOLOGY GRADUATES WORKING AT TIP TOP HELPED DEVELOP THE MEMPHIS MELTDOWN ICE CREAM OTHERS HAVE INVENTED NEW PLANT BASED ICE CREAMS AND NUTRITIOUS ENHANCING BEVERAGES

MASSEY UNIVERSITY

is New Zealand's no 1 ranked university for agriculture, **the only internationally-accredited food technology degree and the only veterinary school.**